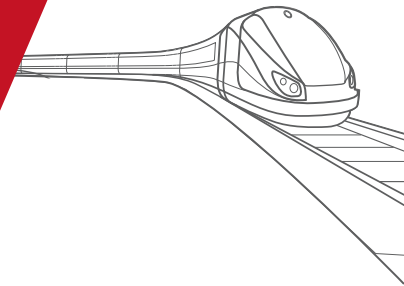


Consulting PT Networks



» ASSISTANCE IN RENEWING PUBLIC TRANSPORT CONTRACTS

• CHALLENGES

The renewal of a contract for the operation of transport or mobility services is a key moment to re-examine the scope and nature of the services as well as their characteristics.

Optimising costs to develop services for the benefit of communities and users

The aim is to ensure that these services meet clearly identified needs and that the cost of these services to the organising authority is correct and optimised.

The contracting authority support missions in the context of the renewal of contracts for the operation and/or management of transport and mobility services aim first of all to draw up an assessment of the current contract, to identify the strong points in order to strengthen them and identify the weaknesses in order to correct them on the occasion of the new contract. The aim is also to characterise the current and future challenges relating to mobility in order to anticipate the most number of changes required in the future contract.

The final objective of these studies is to provide the decision-makers with all the elements necessary to arbitrate the characteristics and content of the future contract, and then to support the local authority throughout the procedure in order to guarantee an optimum balance between the contracted services and the cost of the service for the local authority and users.

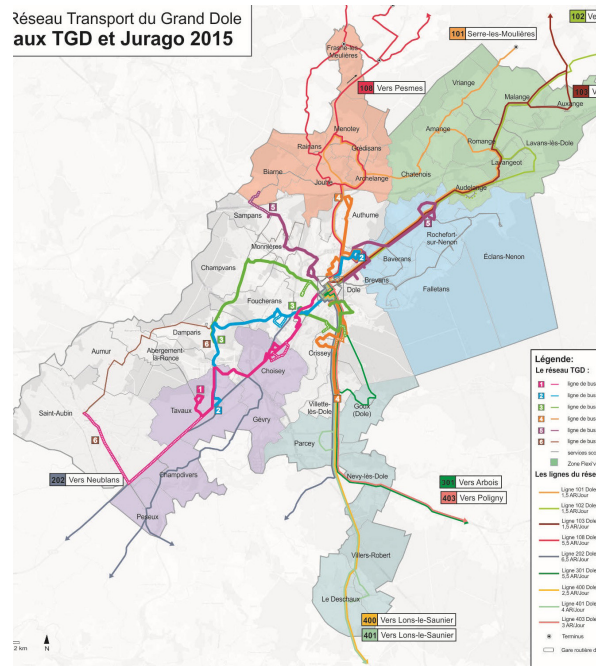
• OUR ASSETS

TTK is involved from the audit of the current contract to the definition of the technical characteristics of the future contract. Our teams also offer support throughout the contracting process and during the implementation of the new contract. Our services can also include contract monitoring.

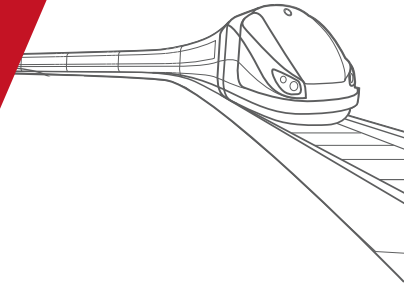
TTK, together with its long-standing financial and legal partners, advises mobility authorities at all stages of the renewal of transport and mobility service management contracts. Our experts bring their detailed knowledge of all the technical issues that may be encountered: definition of services, operating constraints, pricing, rolling stock and alternative drives, depot, alternative mobility and shared mobility services, etc.

Through its projects, TTK particularly defends the issue of clock-face scheduling, which is essential in terms of transparency of the provided service, clarity of timetables and intermodal coordination.

Réseau Transport du Grand Dole aux TGD et Jurago 2015



Consulting PT Networks



» DEFINITION AND RESTRUCTURING OF PUBLIC TRANSPORT NETWORKS

• CHALLENGES

Changes in geographical organisation over time (extension of administrative limits, urban projects, reorganisation of housing, development of commercial and/or business areas, etc.) impose mobility organising authorities to regularly review the relevance of the mobility offer for which they are responsible. At the same time, financial limits require local authorities to verify the proper use of public funds and may force them to optimise or even rationalise the transport offer. The aim of our studies are to define and restructure public transport networks. They consist of an assesment or even an audit of the current operation of the network and an analysis of current and future developments in the area and their impact on mobility. Suggestions are then made on the evolution of the network that meets the challenges of mobility and the possible constraints of operation and the community.

Develop optimised public transport networks that meet current and projected mobility needs

• OUR ASSETS

TTK provides the link between planning and operational implementation. Our teams are involved in the phases of auditing the current network and assessing the geographical organisation, analysing the challenges in terms of mobility development, proposing changes to the network, right up to the concrete implementation of the proposals, and even adapting the transport plan according to the feedback from the implementation.

TTK's experts are unique in their ability to articulate medium/long-term planning and the operational implementation of measures: to design the network in line with the needs of the area, to limit the stress on operation and to meet the financial requirements of the authority. Our vast experience and our many technical skills enable us to integrate all the issues that have an impact on the design and operation of networks (link between public transport projects, pricing, rolling stock, operating constraints, alternative and shared mobility).

• OUR TOOLS

QGIS - Mapinfo - FBS - VISUM - OpenTrack

