

# Preliminary study T1 West Ile de France

## Operational expertise of the T1 extension project between “Asnières Gennevilliers Les Courtilles” and “Colombes”



### Preliminary study Operational study

Client: STIF  
Representative: SNS Lavalin

End: 2013



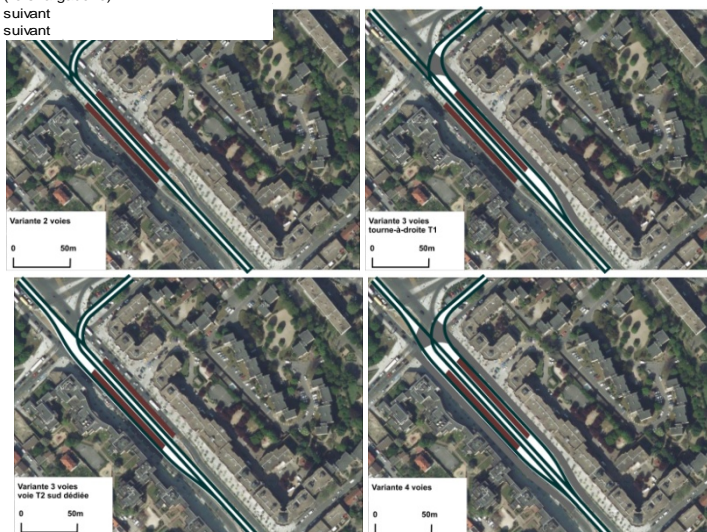
Analysis of possible options to cut the line in different arcs



départ	13-16	10-13	08-10	arrivée
16	09-12	06-09	04-06	08
12	05-08	02-05	00-02	04
08				00
	position de départ	position intermédiaire	position d'arrivée	
	position d'arrivée	position intermédiaire	position de départ	

Functioning of an “operational cut station” for a more stable timetable

05-08	temps présent sur la position (min)
	tram A (vers la gauche)
	tram B suivant
	tram C suivant



Comparison of different station layouts for a common station T1 / T2

The extension project of the line T1 from the station “Asnières Gennevilliers Les Courtilles” to the line T2 in Colombes will contribute to a tram rocade around Paris. This arc will allow better possibilities to go from one district to another in the Paris Nord-West area. This high capacity mode will be connected to the major line such as the tramway T2, the metro line 13 or the rail line J (Transilien).

For the next step from project outline, and till the public inquiry, the transportation authority (STIF) has studied the transport system. This authority has commissioned the joint venture SNC Lavalin – TTK to assist them with the technical assessment around the project.

In the joint venture TTK was responsible for expertise and advice about the future operation on the line:

- study of the line cut: what are the best options to split the line in order to have a reliable operation, for the passengers and the future operator?;
- analysis of the terminus layout and their impact on the operation;
- development of an operational concept based on two intermediate stations dividing the line in three arcs: “operational cut station”
- analysis of the common track section between lines T1 and T2;
- advices about changes or adjustments in the infrastructure planning.