

Operation planning Tram Express South (Paris)

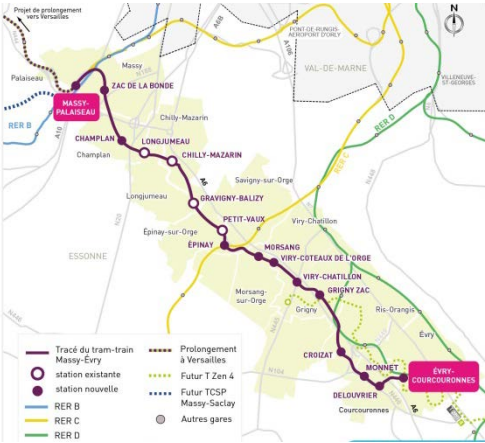
Operational study

Client: SNCF Transilien

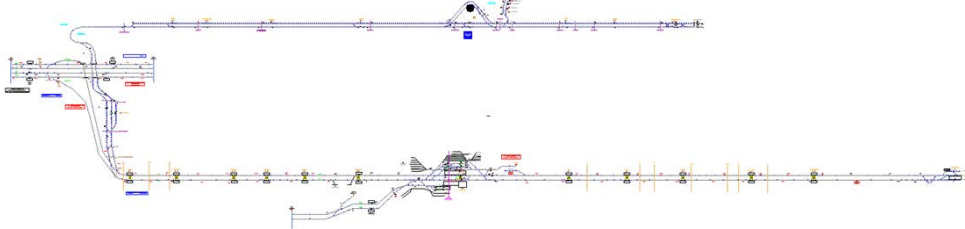
End: 2016



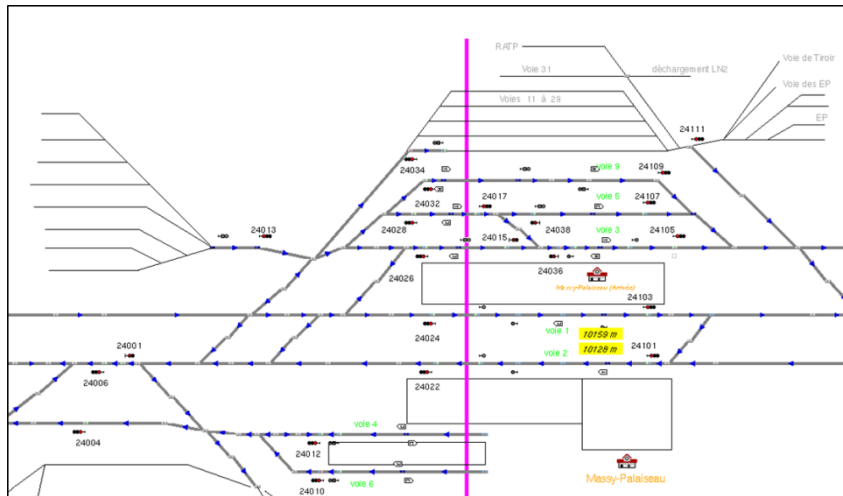
OpenTrack dynamic modelling of future operation for phases 1 & 2 of the tramtrain line from Evry to Versailles



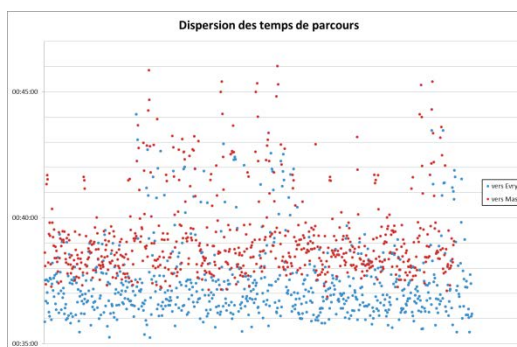
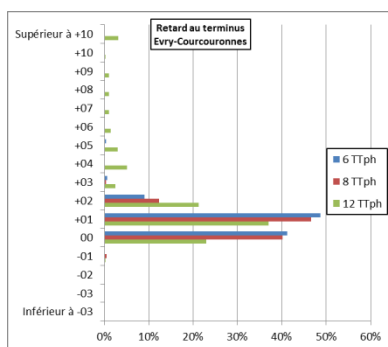
Route for each phase of the projet



Overview of the OpenTrack Model for the whole line



Railway node at the "Mussy-Palaiseau" station



Delay at the terminus depending on the headway (left) & Variation of travel times for a 5 minutes headway scenario (right)

The Tram Express South project consists on the construction of a new infrastructure between Epinay and Evry-Courcouronnes and the reconversion of the section between Massy and Epinay.

TTK realised a study about this line in 2015 to optimise the infrastructure planning looking for the shortest travel time.

A modelling of the whole line had been made with statics simulations by SNCF. However, the infrastructure had to be updated.

TTK has been commissioned by SNCF Transilien to assist them with a second assessment, in particular to:

- update the infrastructure and evaluate its impacts on the operation;
- improve the model by integrating new parameters: dynamic simulations instead of static simulations;
- test the reliability of the operation based on different headway scenarios (from a 10 minutes headway to a 5 minutes headway during peak hours);
- analyse the constraints of the single track section and the railway node at "Mussy-Palaiseau";
- study operational options to serve the future rugby stadium.