

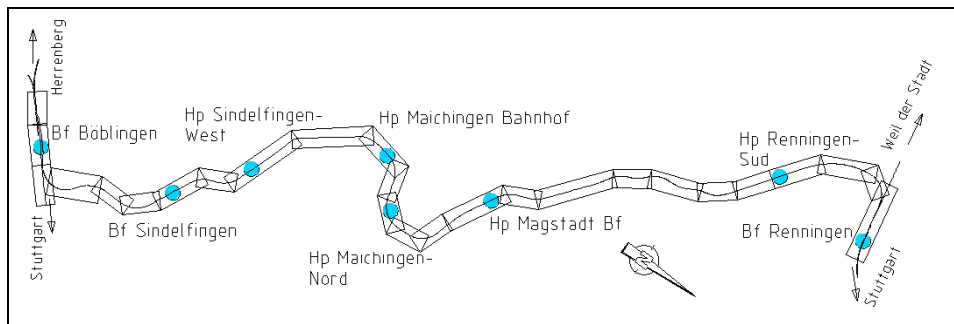
Double track upgrading of the light railway line Böblingen-Renningen (S60), Stuttgart

Planning of a 12 km railway line, 2 new bridges replacing level crossings, construction of 5 new stops as well as modifications to 3 stations, 8 new bridges and extensions to 9 railway bridges, construction of new retaining- and noise-barrier-walls with a total length of 6 km

Technical Planning

Client: Verband Region Stuttgart

Completion: 2004



Layout plan with stations and stops



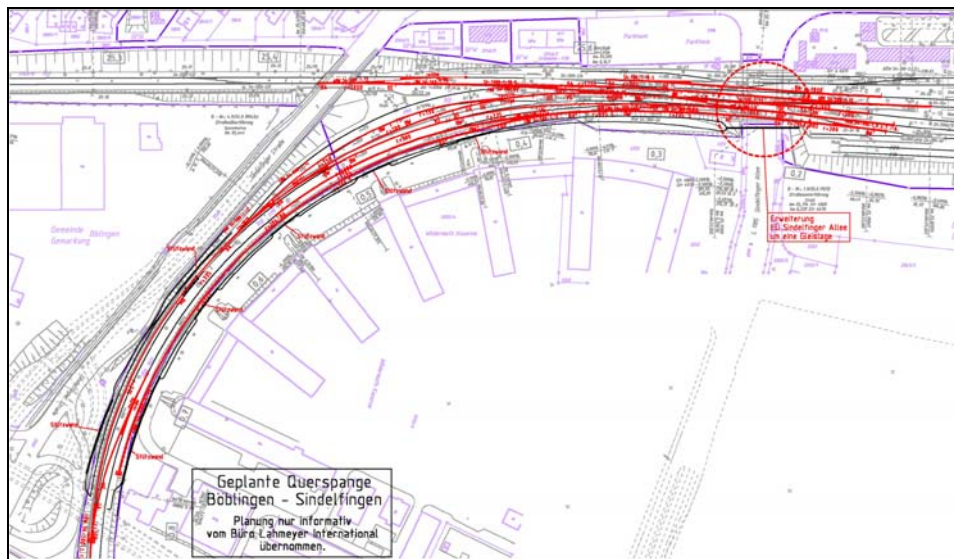
The present single track line between Böblingen and Renningen is used almost exclusively by goods trains. It is mainly used as a by-pass of Stuttgart and as a connection to regional industries (e.g. DaimlerChrysler).

This single track line, which is approximately 12km in length, will be changed to a double track line. At Renningen station vehicles are coupled or split to go into 2 different directions. One vehicle has the destination Weil der Stadt (present S6 line in operation) and the other heads for Böblingen with a direct connection to the S1.

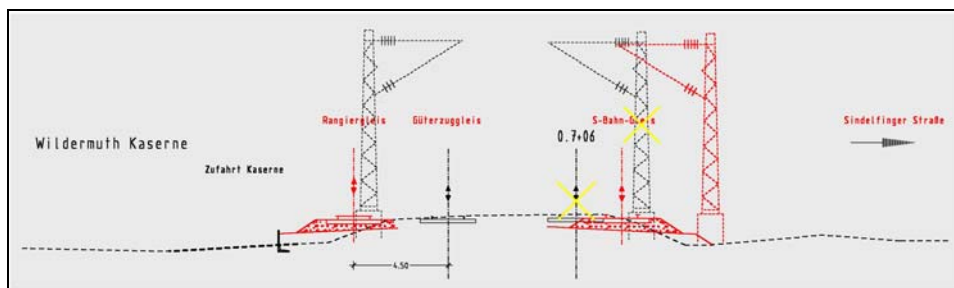
The project also entailed a thorough redesign of 3 existing stations as well as 5 new stops with appropriate access ways.

Three existing level crossings in Magstadt and Renningen had to be replaced by new road and rail bridges. At these crossings the boom would otherwise have to be closed for too long for the traffic intensity on the crossing roads.

The future double track upgrading thus included the expansion of all existing crossings. A total of 17 existing bridges will be built new or be modified. In addition, several hundred metres of retaining- and noise-barrier-walls will be built.



Site plan of Böblingen station – preliminary design



Cross-section of Böblingen station – preliminary design

Double track upgrading of the railway line Böblingen Renningen (S60), Stuttgart

Planning of a 12 km railway line, 2 new bridges replacing level crossings, construction of 5 new stops as well as modifications to 3 stations, 8 new bridges and extensions to 9 railway bridges, construction of new retaining- and noise-barrier-walls with a total length of 6 km

Technical studies

Client: Verband Region Stuttgart

Completion: 2004



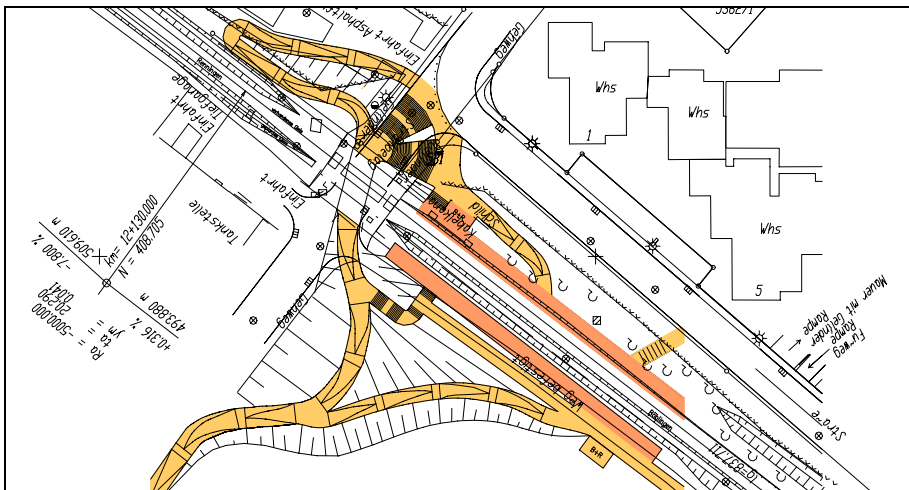
The single track light railway line between Böblingen and Renningen was to be upgraded on a 12km section to a double track railway.

Apart from track designing, this study consists of, amongst other:

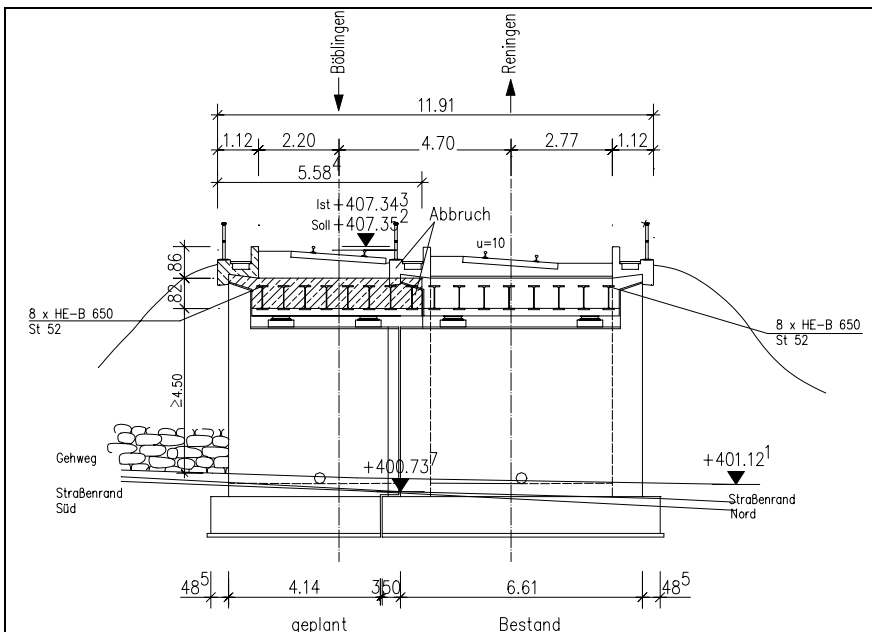
- 17 bridges (new ones and extensions to existing ones) at the sites of existing bridges, varying in construction method.
- two new bridges comprising stops with platforms.
- the replacement of three level crossings with three new bridges according to German legal requirements.
- Several hundred meters of retaining-walls in cutting and embankment areas.
- Noise-barrier-walls in urban areas.

In addition, five new stops with side-platforms are planned. Of these, four pedestrian underground passages with steps as well as ramps for persons with reduced mobility are planned.

The station of Renningen is also being upgraded to improve access for people with reduced mobility.



Renningen-Süd station - Site plan - Preliminary design



Railway bridge Gottfried-Bauer-Straße – Cross-section - Preliminary design